

The MONSTER Who Came to Tea



by A. Survivor

The Monster Who Came to Tea

by A. Survivor

It was a Thursday, just like any other.



Lily's favourite tea had been made by her mother.

As Lily slurped up wiggly worms galore,



her slurping was disrupted by a knock at the door.

KNOCK!
KNOCK!
KNOCK!!!





Lily opened the door
and shrieked in surprise...

A large, purple, smiling monster with blue eyes and a small, dark, grumpy-looking creature perched on its head. The background is a warm, orange and yellow glow.

...at a charming-looking monster,
at least **THREE** times her size!



Sniff!
Sniff!

Sniffing the air and through a disarming, wide grin...

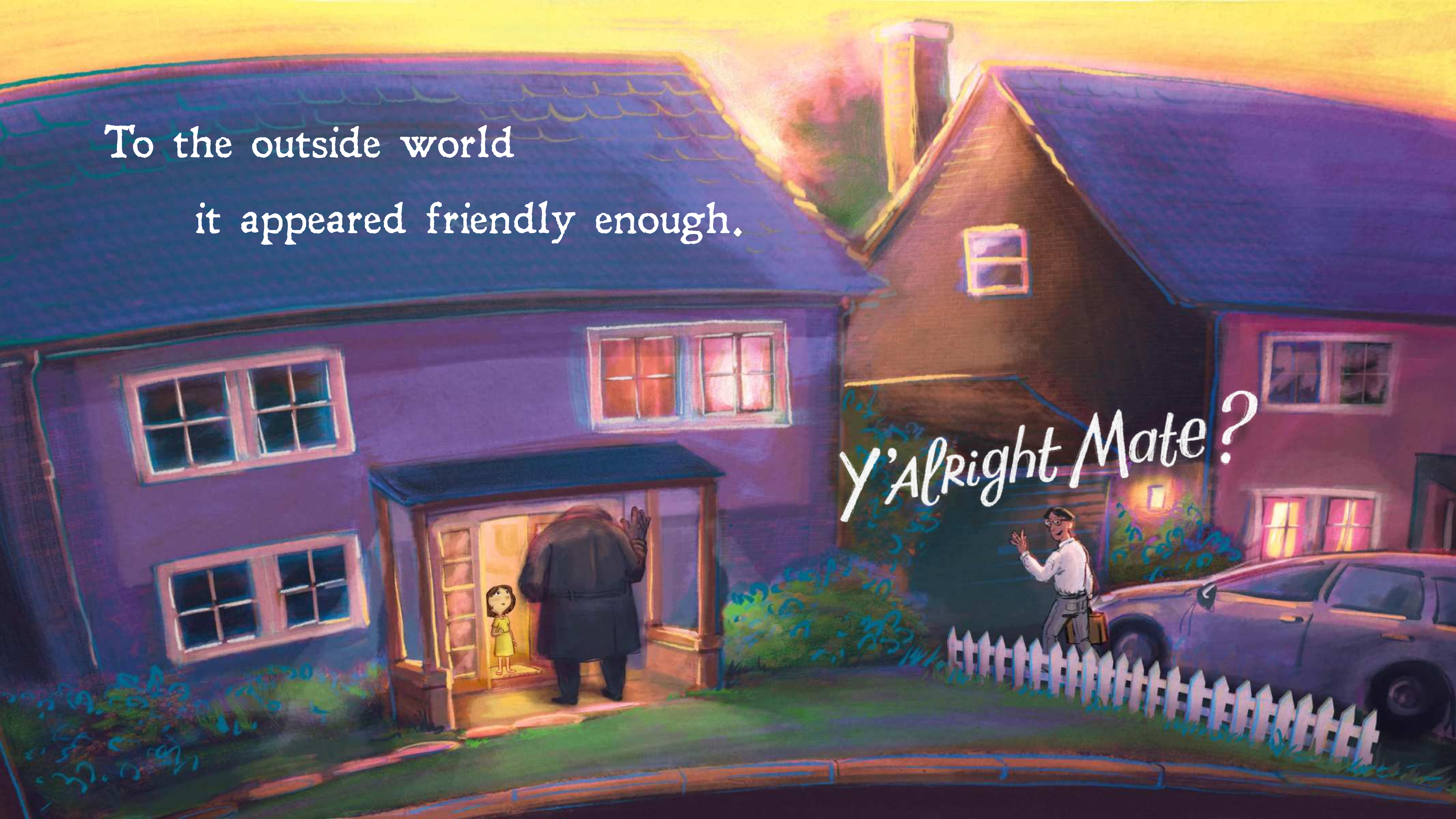


...it said:

*“I Smell Spaghetti,
CaN I Come in?”*

To the outside world
it appeared friendly enough.

Y'Alright Mate?



But once behind closed doors
it grew moody and rough!



They tiptoed nervously
after the big hairy slob...

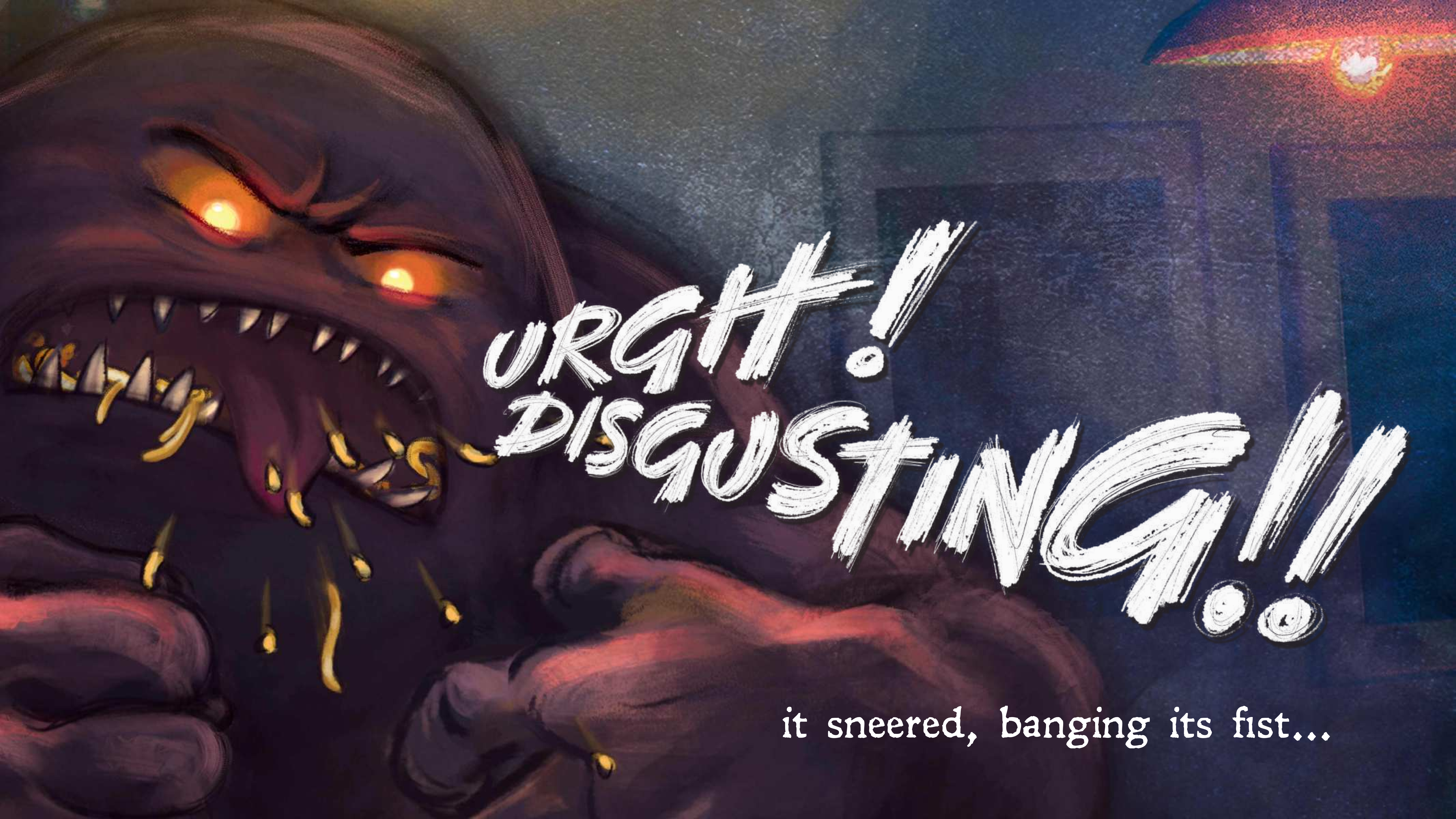




SLURP!!

...to find it shoving fistfuls of tea into its gob!





URGH!!
DISGUSTING!!!

it sneered, banging its fist...



launching a plate at mum's head...



...that only just missed!




As its shards shattered violently...

An illustration in a painterly style depicting a mother and daughter in a dark, stormy night. The mother, with long brown hair and a pink dress over a yellow cardigan, stands protectively behind her daughter. The daughter, with short brown hair and a yellow dress, looks up at her mother with a worried expression. They are positioned near a doorway or window, looking out into a dark, swirling storm. A bright orange fire or explosion is visible in the background, and a glowing yellow object, possibly a ring or a piece of jewelry, lies on the ground in the foreground. The overall mood is one of concern and urgency.

...mum calmly said:

“OK Lily, go get ready for bed.”



Lily backed out of the room,
praying it wouldn't react.

Experience had taught her to avoid eye contact.

Climbing the stairs,



A close-up illustration of a young girl with short, wavy red hair. She is peeking through a narrow vertical crack in a dark brown wooden door. Her face is pale with a pinkish tint, and her large, dark eyes are wide open, looking back over her shoulder with a nervous or fearful expression. Her hands are gripping the edges of the door frame on either side of the crack. The lighting is warm and focused on her face, while the background is dark and indistinct.

she looked back

once more...

An illustration depicting a scene from a story. On the left, a young girl with short brown hair, wearing a yellow dress, is sitting on a staircase. She is looking out from behind a dark wooden railing with a red handrail, her expression one of fear or concern. To the right, a dark, shadowy figure of a monster is visible behind a door. The monster has a large, dark head and a body that appears to be made of shadow or smoke. The door is slightly ajar, and the monster is looking through the gap. The overall atmosphere is dark and mysterious, with a focus on the contrast between the light-colored girl and the dark, menacing shadow.

...to see the monster hurl vile insults,
through a gap in the door.



WHAT'S WITH THE MAKE-UP?

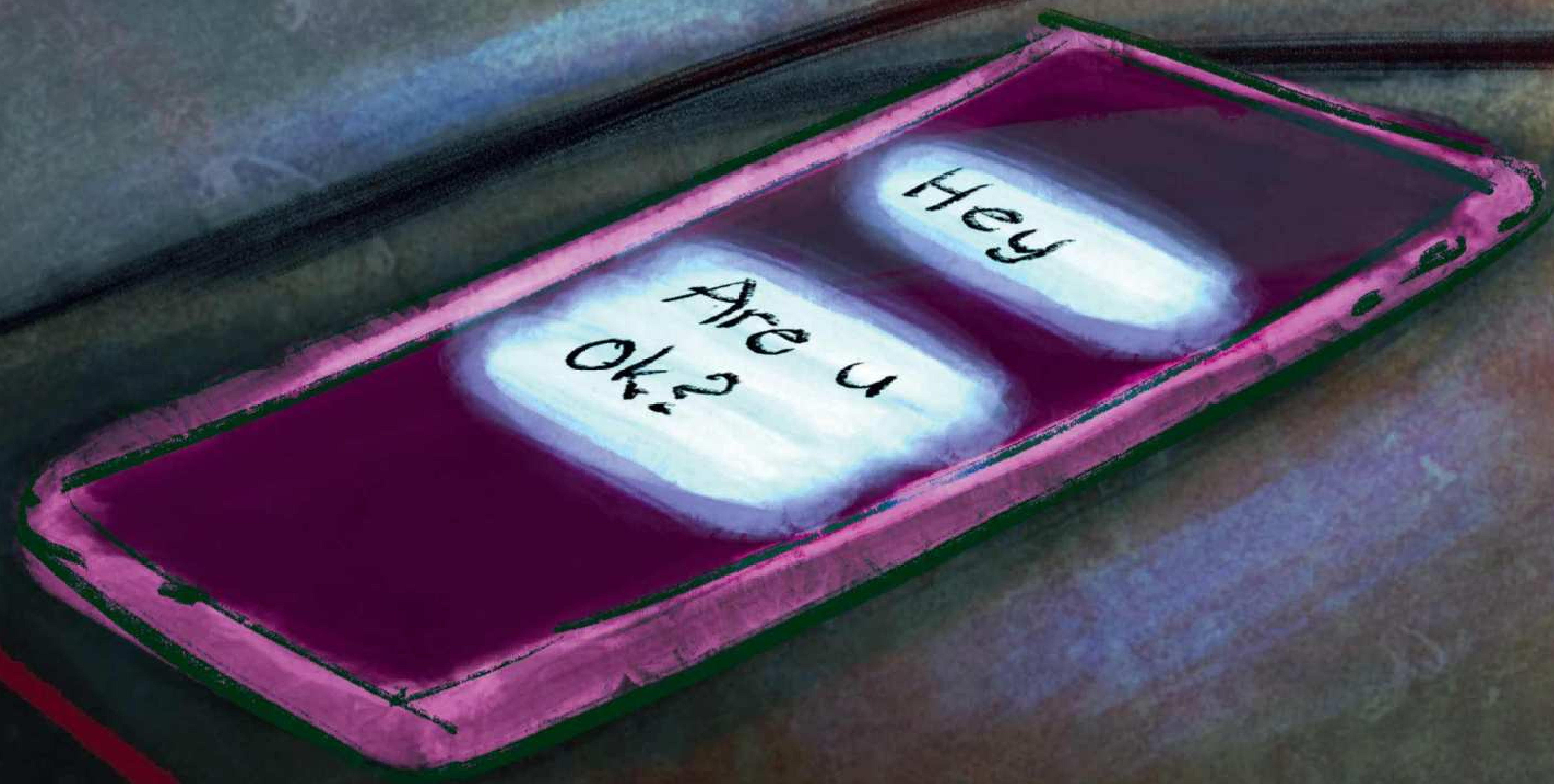
AND THE REVEALING DRESS?

YOU KNOW I DESPISE IT!!

WHO YOU TRYING TO IMPRESS!?

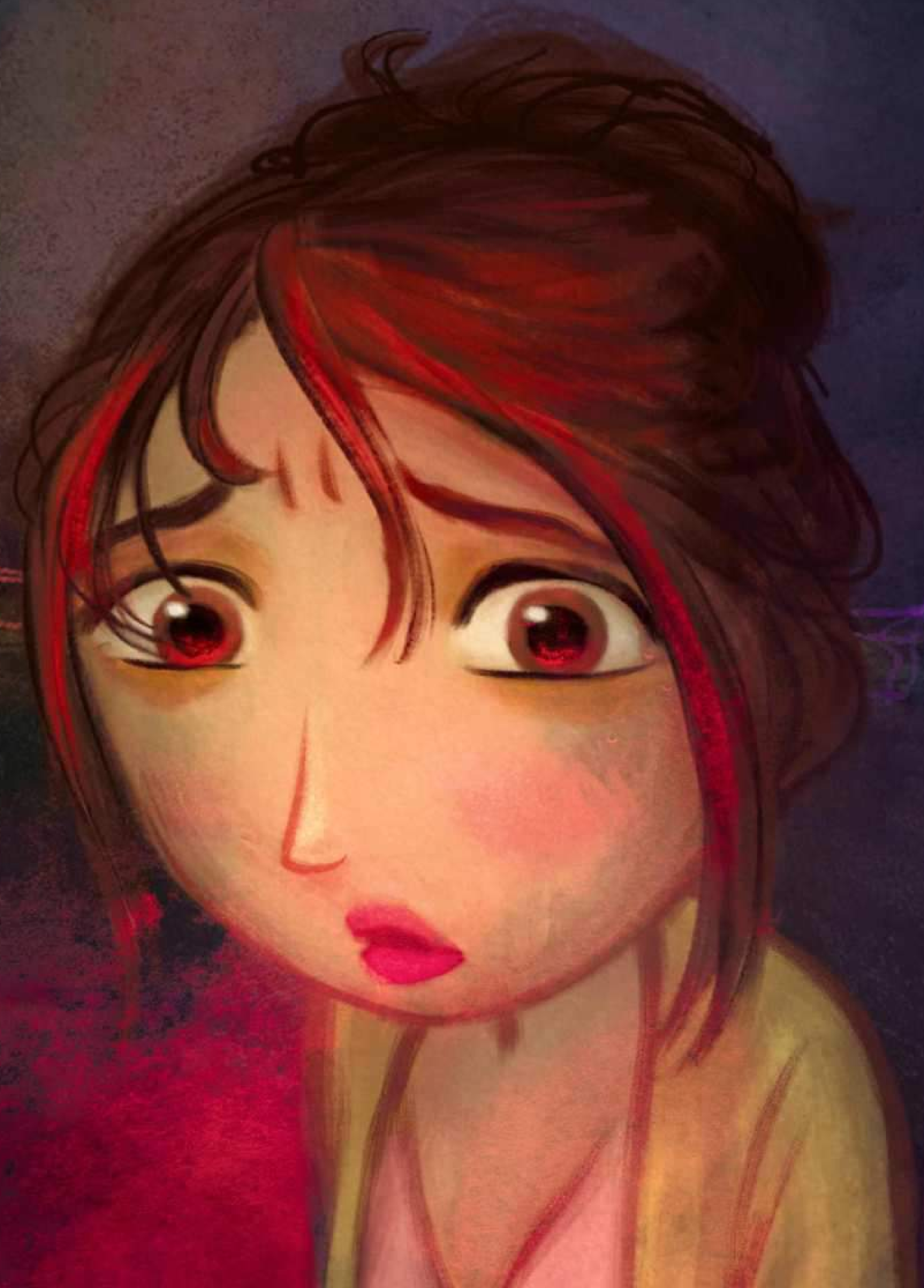
A dark, atmospheric illustration. In the foreground, a young person with short brown hair, seen from the back, wears a yellow shirt. In the background, a large, dark, monstrous face with glowing red eyes and sharp teeth looms over a desk. On the desk, a smartphone displays the word 'Hey' on its screen. A desk lamp with a yellow light hangs above the desk. The scene is dimly lit, with the primary light sources being the desk lamp and the monster's eyes.

The monster seethed
at mum's friends sending her texts...





After smashing her phone,
they both knew...





...what happens next.

The monster's fists tightened,
its knuckles whitened...





as it towered over mummy,
who was now **REALLY** frightened!

women's aid

until women & children are safe